

### Cleaning&Maintenance

Clean the sundries regularly to prevent the drain from being jammed.  
Usually, clean shower enclosure by mop with mild detergent.

Don't clean the shower enclosure with irritant detergent. such as alcohol, gasoline or other chemical cleaner.

Should there be any dirty stains on the shower enclosure, you may clean it by calico with toothpaste, but you need to clean it with water afterwards.

After the installation is completed, if you find there is much noise when the glass door moves, you may add small quantity of lubricant onto the roller wheel, slipping hook and the track.

## INSTALLATION GUIDE



♡ Please refer to the instructions according to the style you buy!

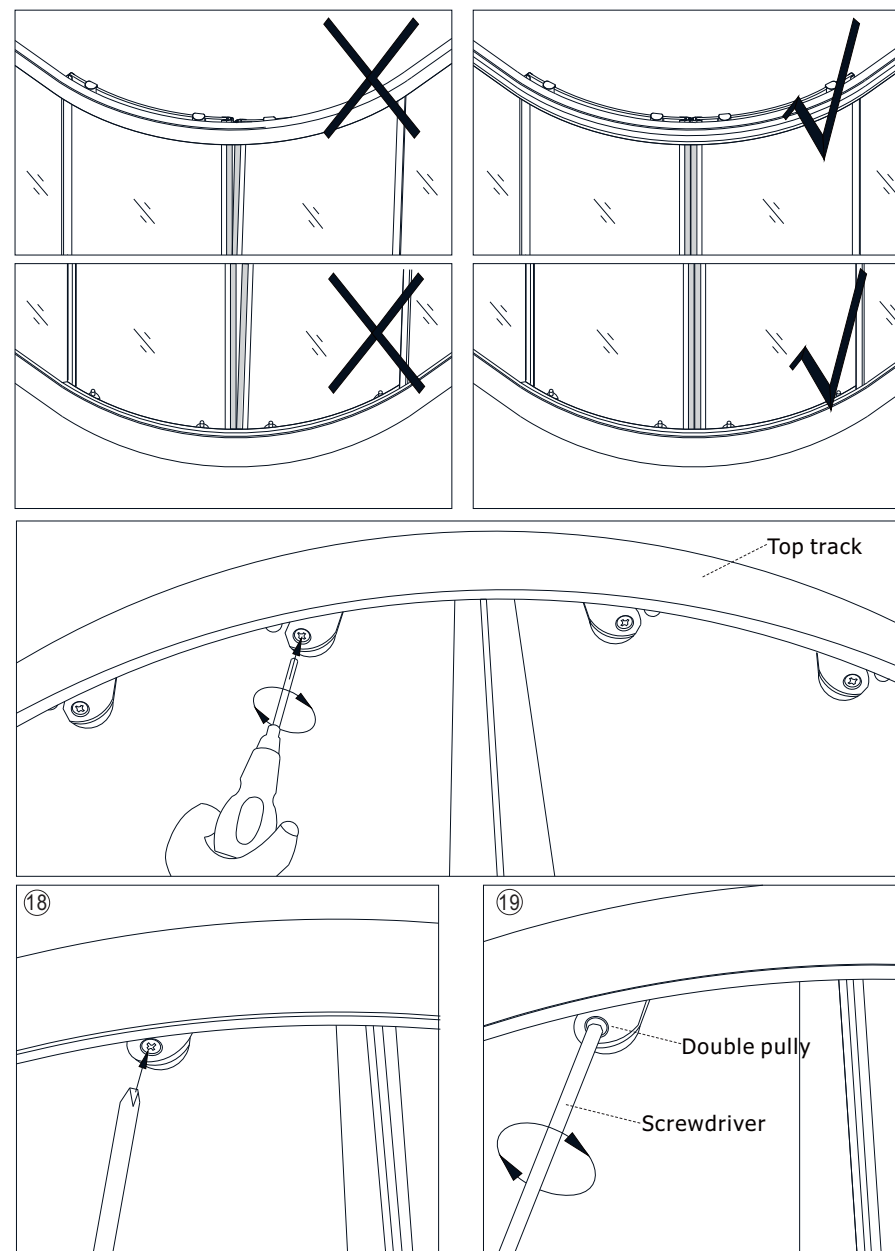
Thanks for choosing our products,we'll provide best service for you.Please carefully read the whole manual before installation and use.

## CONTENTS

Part Lists -----	1
Determine the right place -----	3
Installtion the fix glass -----	
Connet the track and Alum.profile-----	4
Fixed aluminum inter casing -----	6
Installation of Sliding glass door and pully-----	8
Adjust the sliding door -----	9
Cleaning&Maintenance-----	10

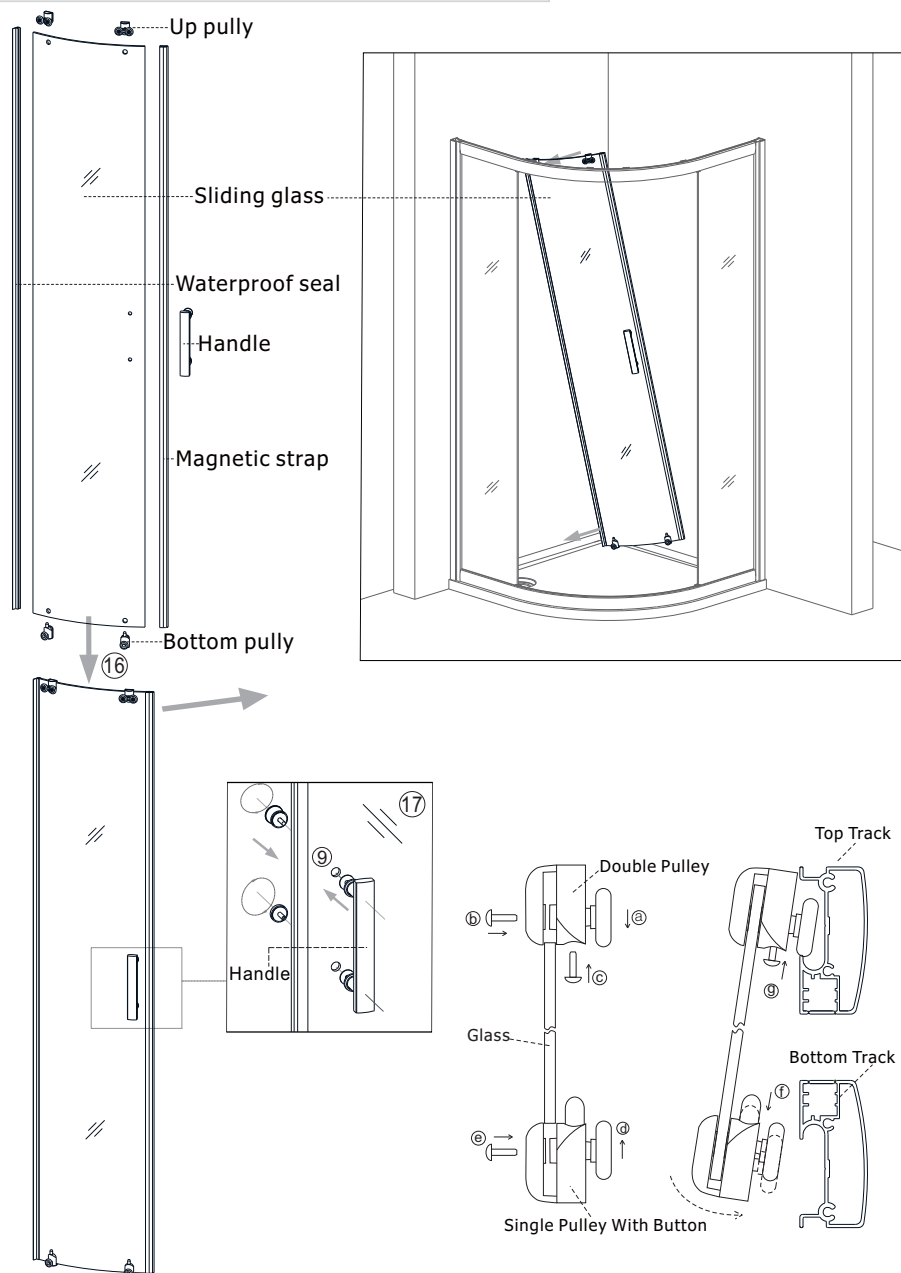
In case there are some different between picture and produces,please take the products as standard or referto the sample!

## 6) Adjust the sliding door



6.1)Please hang the rollers of sliding door into the aluminum track ,if find the middle of 2 pcs sliding doors is out of the vertical or if with gap between 2 doors after installed the magnetic stripe ,you can adjust the screw of rollers by screwdriver ,to make sure the 2 pcs sliding doors can be closed well .

## 5) Installation of Sliding glass door and pulley

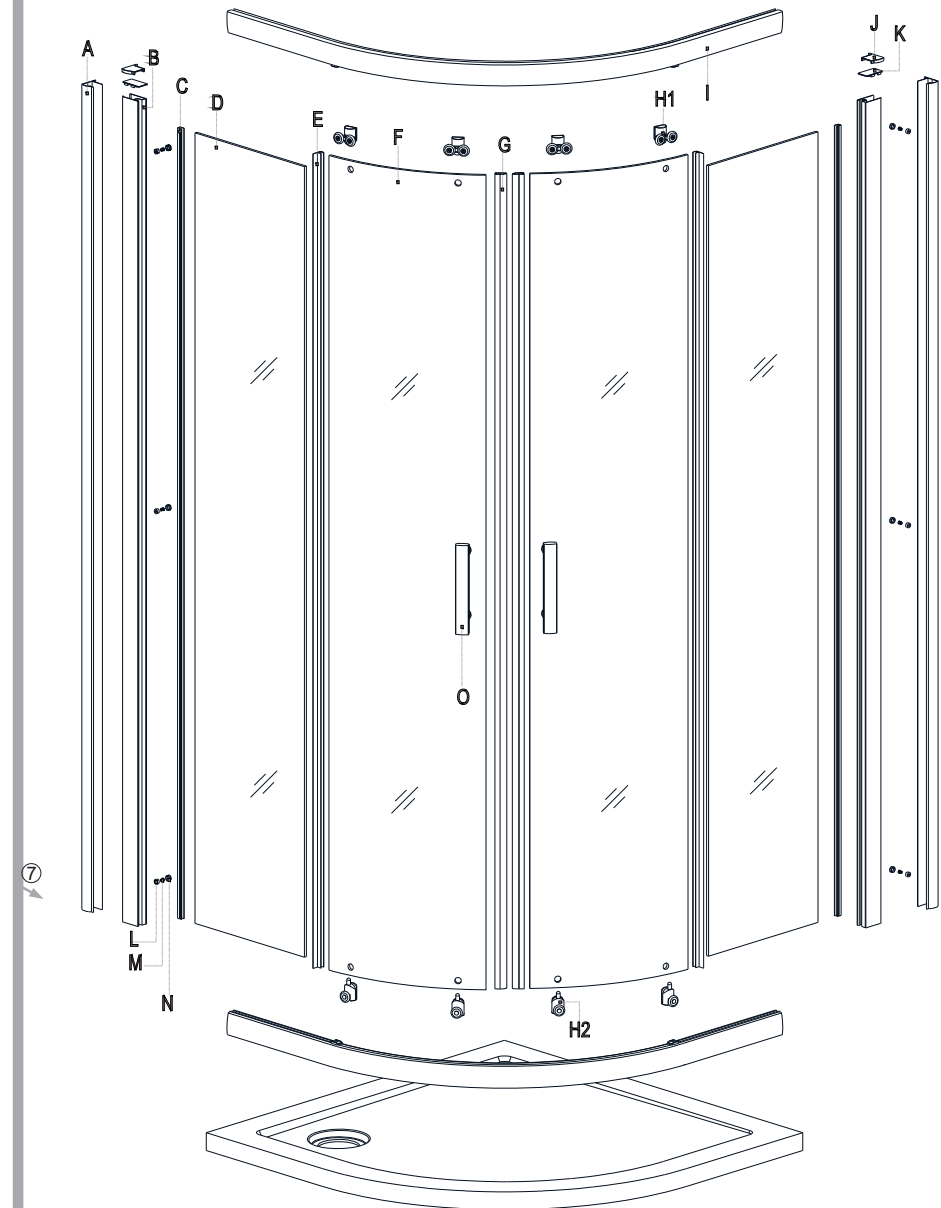


5.1) Fix the wheel to the sliding glass, cover the cap of the wheel after adjust it. Install the waterproof seal and the magnetic strap .

5.2) Put the sliding door to the guide rail. adjust the screw on the wheel to adjust the sliding door.

## 1) Part Lists

### 1.1) Product structure diagram



## 1.2) List of Spare Parts

No.	Icons	Parts name	Quantity
A		Aluminum alloy interior casing	2 PCS
B		Aluminum frame	2 PCS
C		"U" Shape Strap	2 PCS
D		Fixed glass	2 PCS
E		Waterproof seal	2 PCS
F		sliding glass	2 PCS
G		Magnetic strap	2 PCS
H		Pully	4 PCS + 4 PCS
I		Top/Below track	2 PCS
J		Plastics-J	1PCS + 1 PCS
K		Plastics-K	2 PCS
L		Plastic gasket	6 PCS
M		Fix Screw (ST4*12)	6 PCS
N		Plastics cap	6 PCS
O		Handle	2 PCS

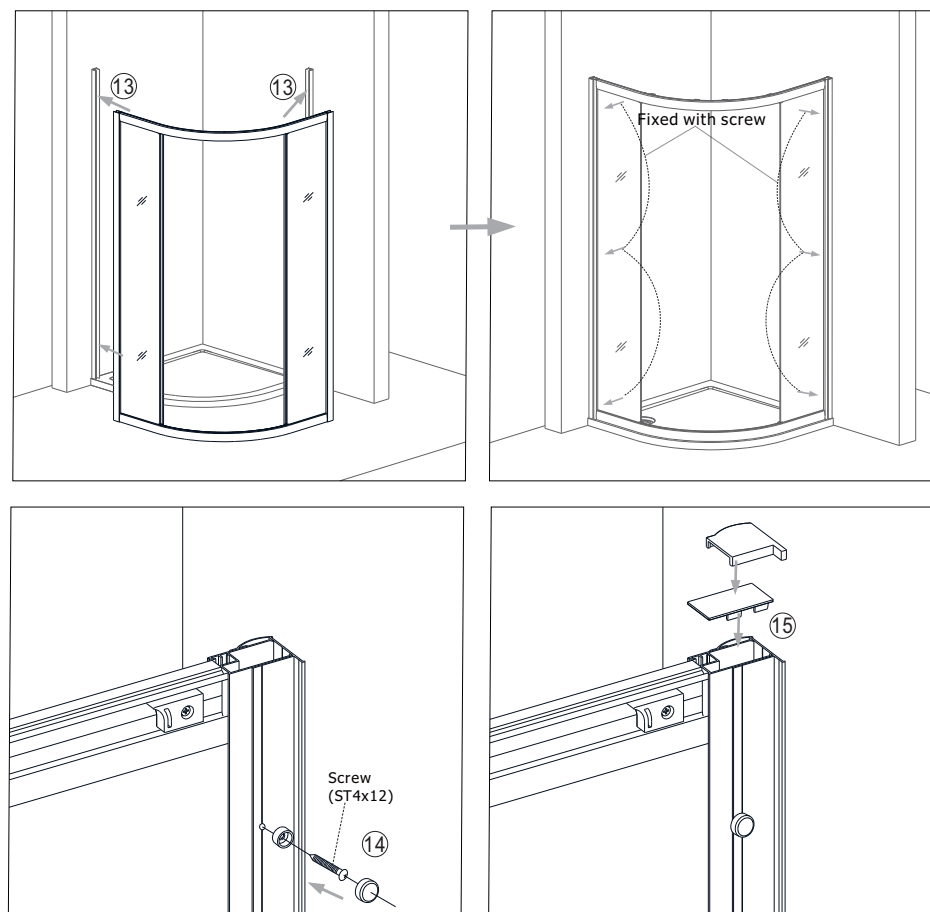
No.	Icons	Parts name	Quantity
1		Plastic stuffing	6 PCS
2		Screw (ST4*30)	14 PCS
3		Rubber block	4 PCS+4 PCS
4		Big Screw (ST4*10)	4 PCS
5		Plastics-T	4 PCS
6		"U" Shape Strap (Track)	4 PCS

## 1.3) Tools require

Pencil (a)	Sealant (b)	Screwdriver (c)	Hammer (d)
Spirit level (e)	Power drill (f)	Allen wrench (g)	Shears (h)

\* Some spare parts may have been installed already.This list is for your information only.

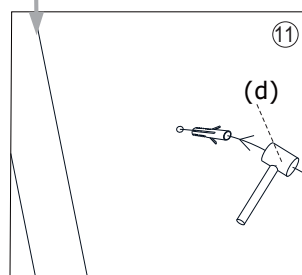
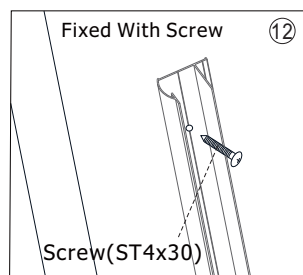
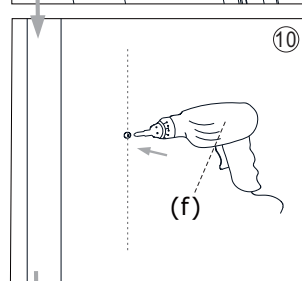
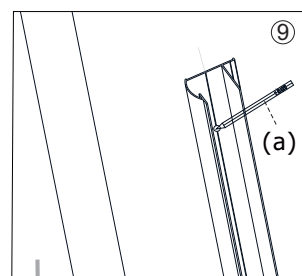
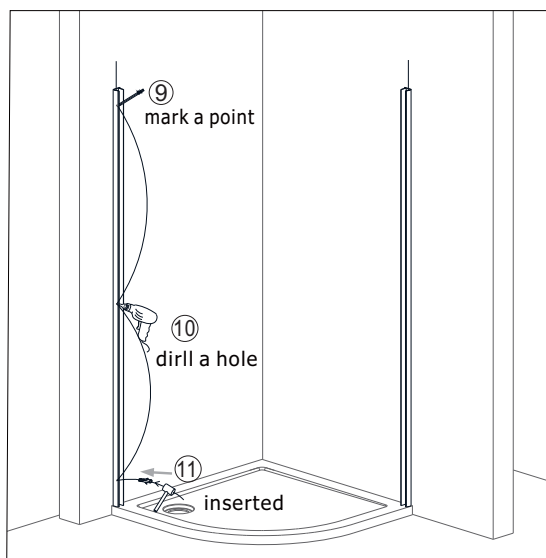
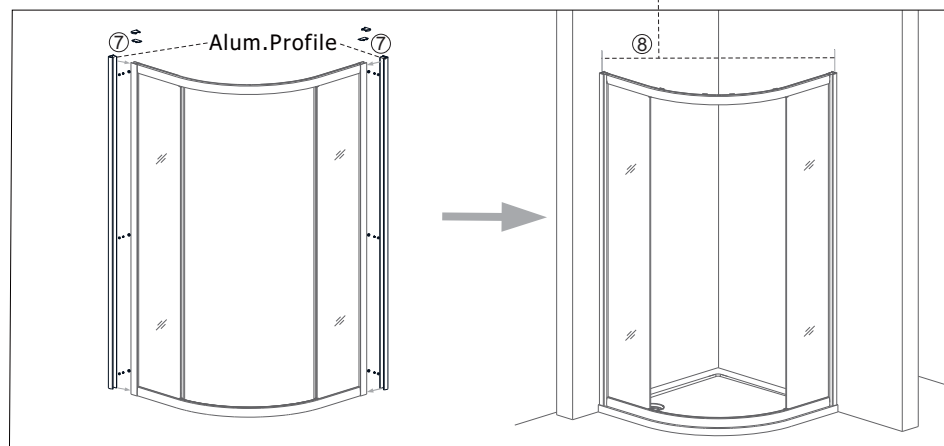
4.1) Please insert the aluminum frame into the shower screen one by one , then put it into a right place , then make a mark on a fixed hole ,then take out the shower screen in another place ,make holes in the wall ,and insert the setscrew, and fasten it against the wall by screw ST4X30.



4.2) Finally ,move again the shower screen into the right place,fasten and connect the outside frame and inside frame ,and then fix the decorative cap of screw.

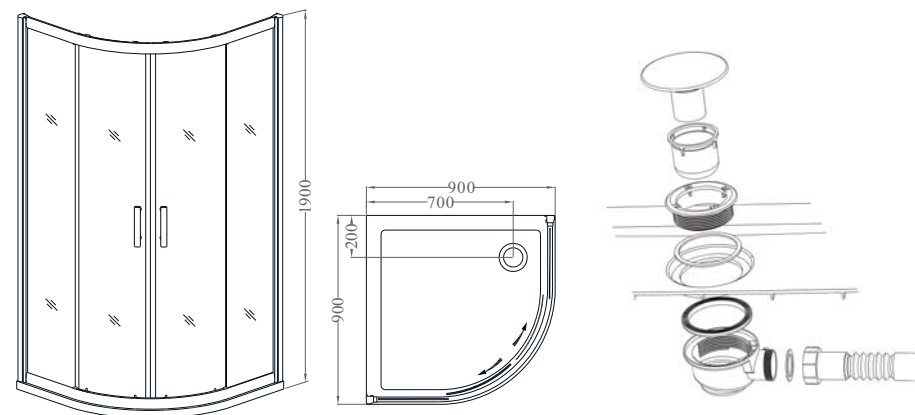
#### 4) Fixed aluminum inter casing

Mark a line -Determine the right place

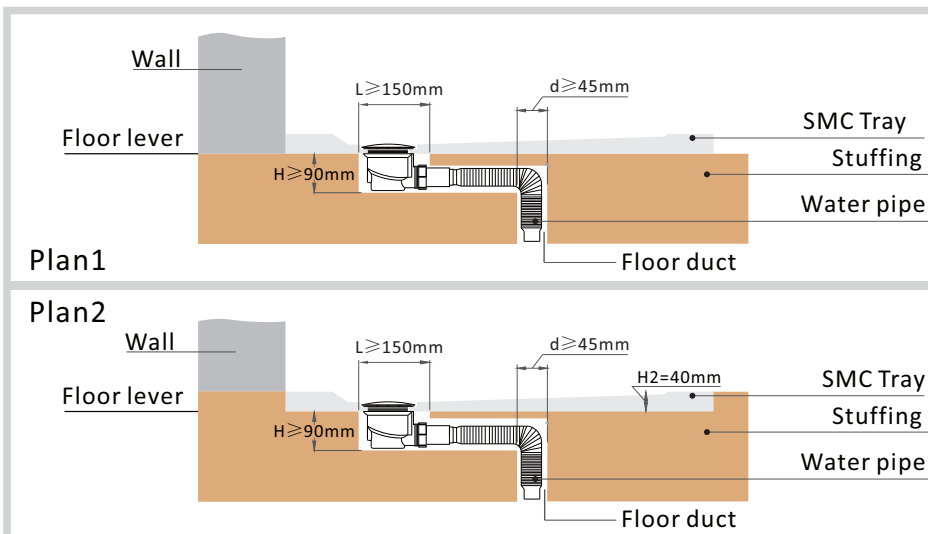


#### 2) Determine the right place

We can supply you the follow size SMC shower tray to match the shower enclosure ,of course you also can choose some other doorsill or shower tray , but please check the drawing size for reference. Please note that it doesn't means the standard product have SMC shower tray , just for a reference .



#### The Structure Diagram For Siphon

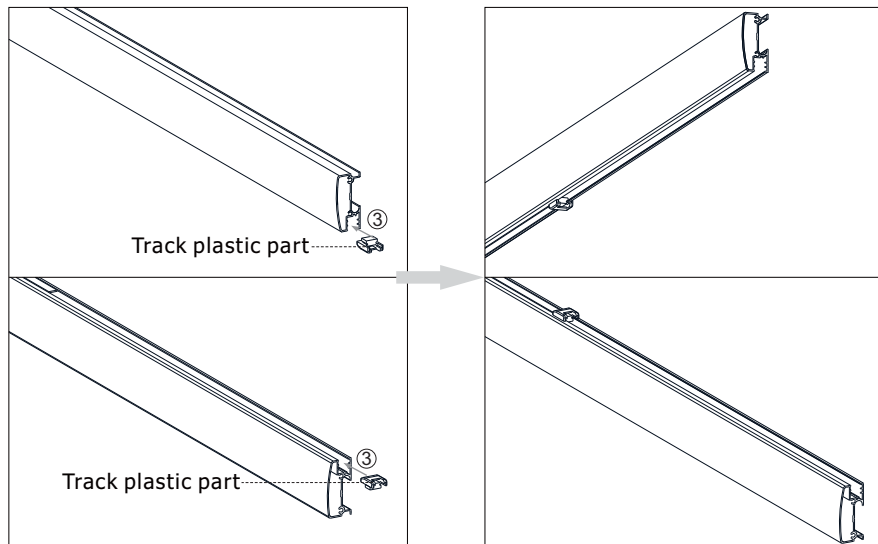
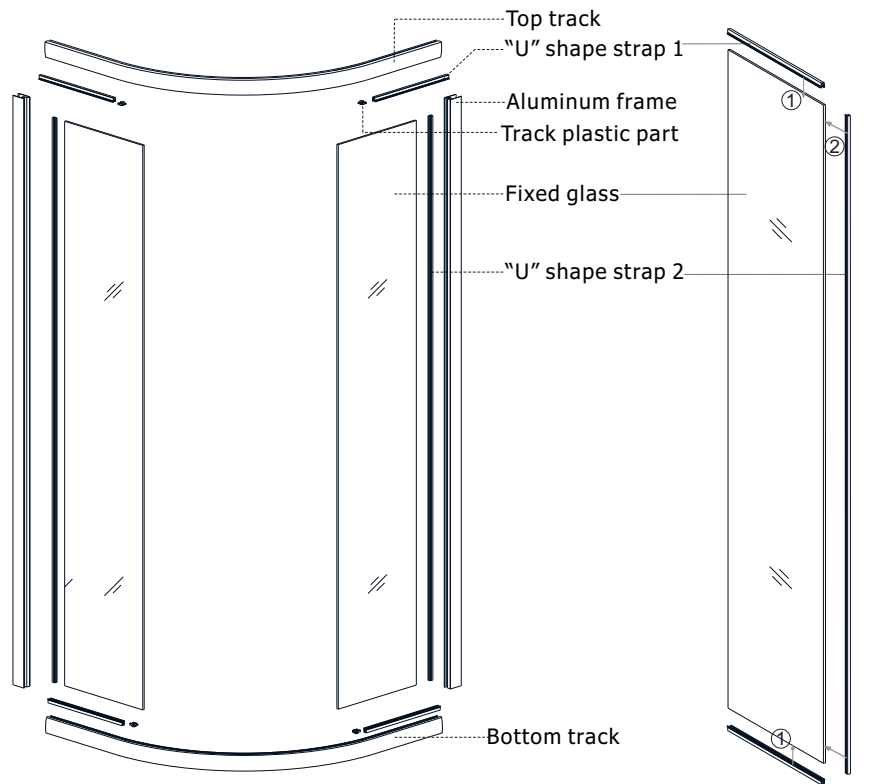


You can install SMC tray as your required ,such as plan 1 and plan 2.

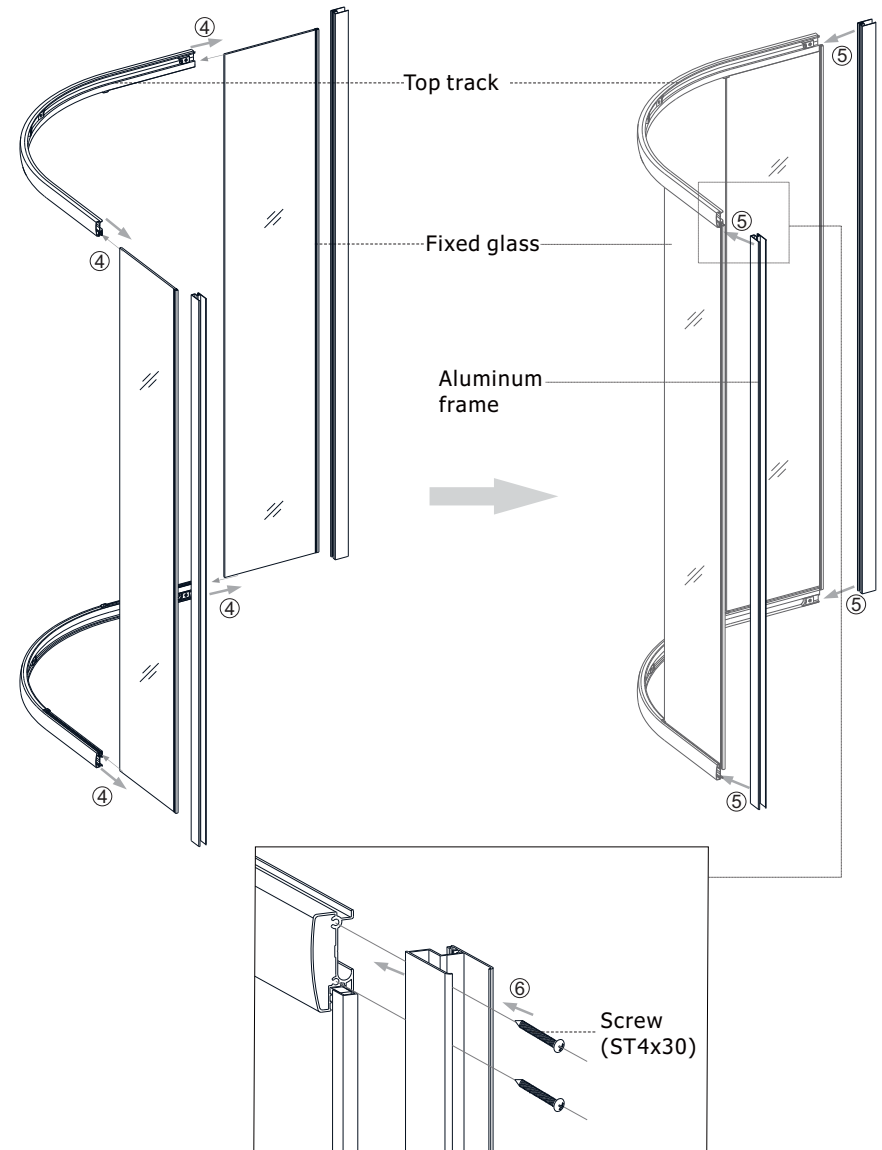
Attention :

- 1.Pls keep the position of hole for siphon in advance,the SMC tray size and structure diagram for a reference.
- 2.Pls make sure its smooth between bottom of tray and floor.

### 3) Installation the fix glass . Connet the track and Alum.profile



\*This step installation may have been completed in advance.



- 3.1) Please insert the glass clamp into the aluminum alloy track (maybe it have been fixed already) , then please insert the U shape strap into the fixed glass .
- 3.2) Please insert the top aluminum alloy track and bottom track into fixed glass tightly .
- 3.3) Please fasten the aluminum alloy frame in each side by screws .