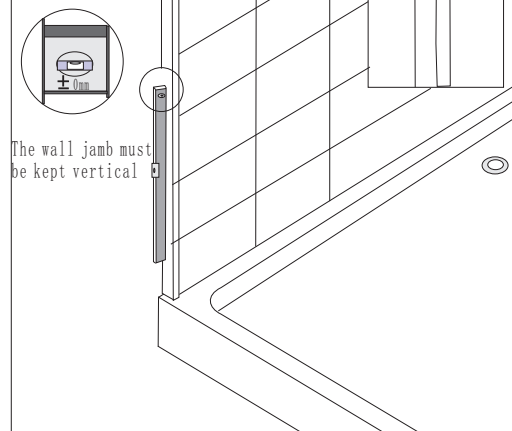
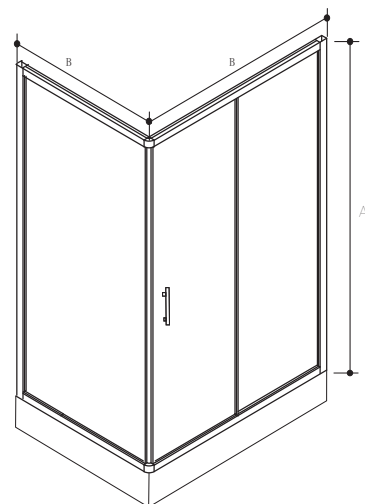


**Step3:**

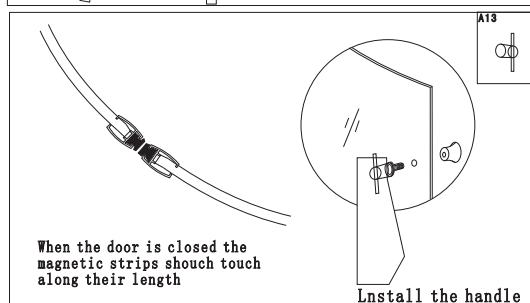
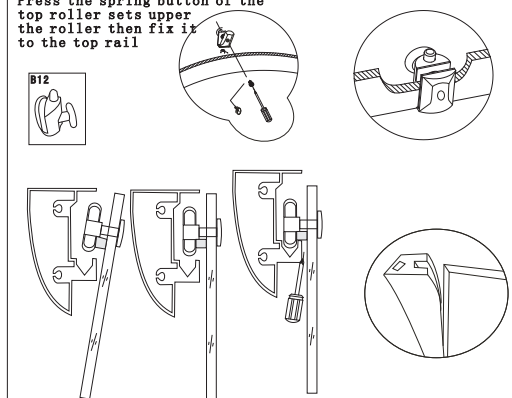
Fix the wall jamb

**Step4:**

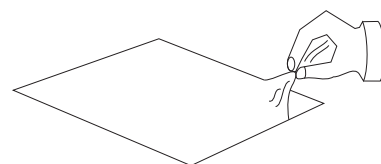
Roughing-In Notes		
	A	B
ADL-8001	185+16	120+80/100+80
Note: Max. door opening is 420mm		

**Step5:**

Press the spring button of the top roller sets upper the roller then fix it to the top rail

**Step6:**

Remove the protective layer on the ABS tray the roof That will make it look nice

**Step7:**

thin bead of sealant between the wall channel and the bottom frame.

do not use the enclosure for at least 24 hours.



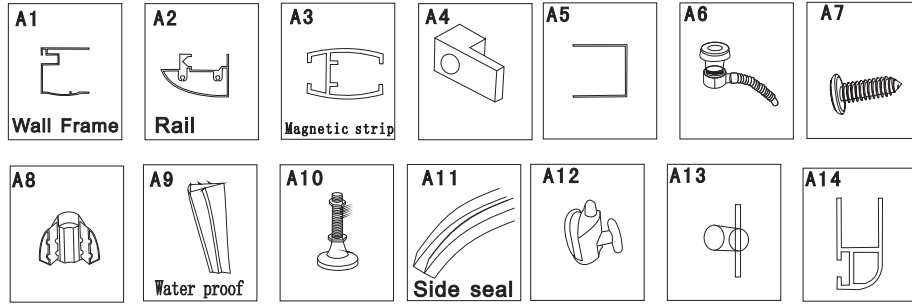
# INSTALLATION MANUAL



**ADL-8001**

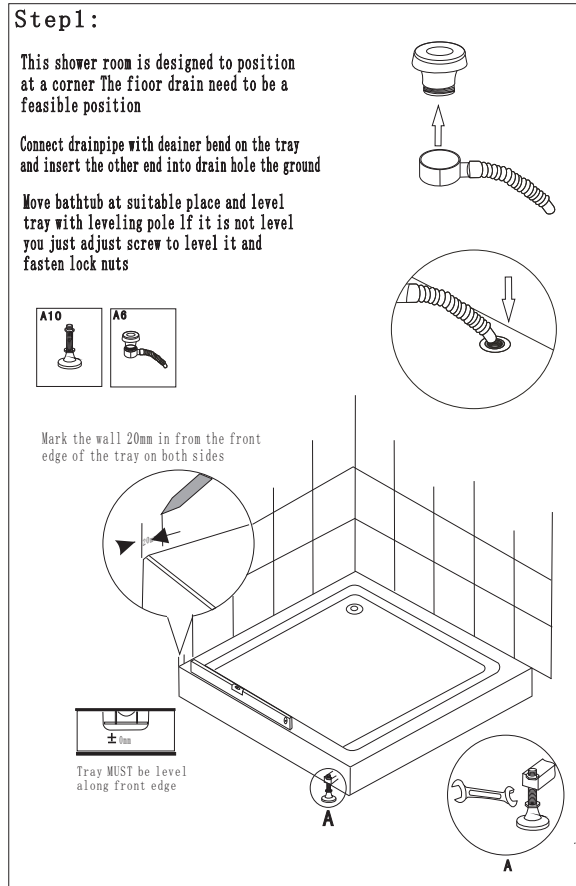
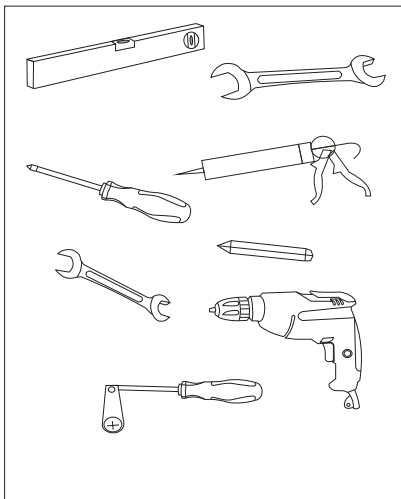
**Size: 120\*80\*196cm 100\*70\*196cm**

# Part Of Accessories



These drawings are just for reference The accessories have many different styles and something maybe have been fixed on already please check it

# Part Of Tools



# Step2:

